

# Economic Self-Sufficiency

---

## Presentation to the House Children, Families, and Seniors Subcommittee

Cate Stoltzfus, Chief Legislative Analyst for Health and Human Services



# OPPAGA

Office of Program Policy Analysis and Government Accountability

FEBRUARY 22, 2023

# Presentation Overview

---

- **Assistance Programs**
  - Goals of Assistance Programs
  - Program Eligibility and Time Limits
- **Assistance Program Participation**
  - Program Enrollment
  - Non-Disabled Working Age Adult and Child Participation
  - Participant Characteristics
- **Barriers to and Attainment of Economic Self-Sufficiency**

# Assistance Programs

---

# Goals of Assistance Programs

Program	Goal	State Agency
<b>SNAP</b>	<b>Supplemental Nutrition Assistance Program (SNAP):</b> Food assistance and nutritional support for low-income families and individuals	<b>DCF</b>
<b>TCA</b>	<b>Temporary Cash Assistance (TCA):</b> Cash payments for low-income families with dependent children provided under Temporary Assistance for Needy Families (TANF)	
<b>Medicaid</b>	Health care for low-income families and individuals	<b>DCF and AHCA</b>
<b>School Readiness</b>	Financial assistance to help children from low-income families receive high-quality child care and education so their parents can work or participate in job training	<b>DOE's Division of Early Learning</b>

# Initial Program Eligibility and Time Limits

	SNAP	TCA	Medicaid	SR <sup>1</sup>
Eligible Households	Any household	Households with a dependent	Varies by age and life circumstance	Households with a dependent under age 14
Income Limits	200% FPL <sup>2</sup>	185% FPL	Varies by household type	72% SMI <sup>3</sup>
Asset Limits	\$2,500	\$2,000	No	\$1,000,000
Work Requirements	Yes	Yes	No	Yes
Time Limits	3 months (ABAWDs only) <sup>4</sup>	48 months (except child-only)	No	No

<sup>1</sup> SR: School Readiness

<sup>2</sup> FPL: Federal Poverty Level

<sup>3</sup> SMI: State Median Income

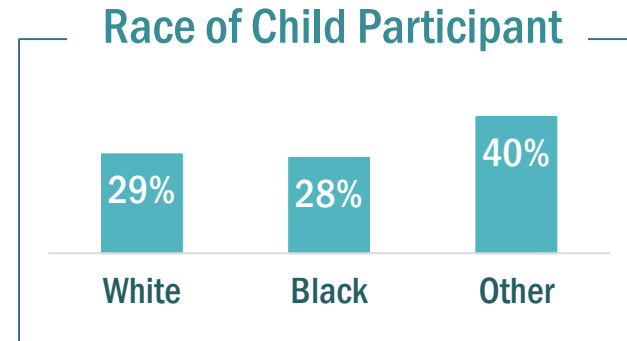
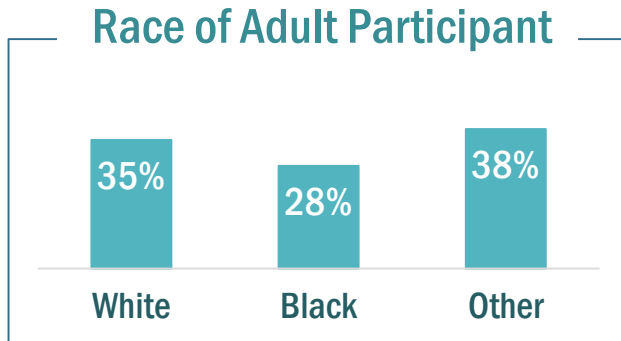
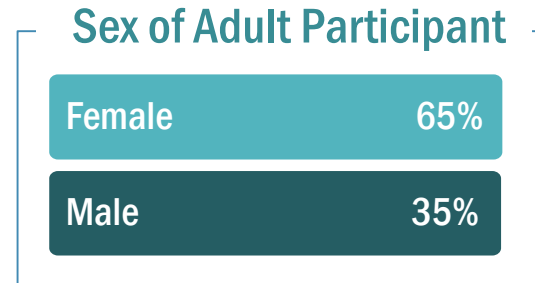
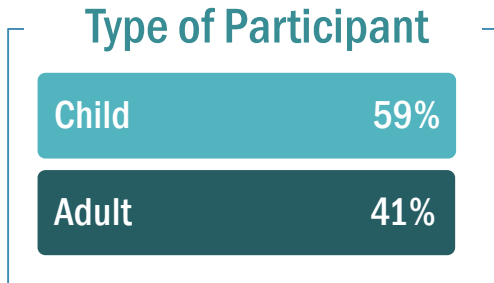
<sup>4</sup> ABAWD: Able-Bodied Adult Without Dependents

# Assistance Program Participation

---

# Characteristics of SNAP, TCA, and/or Medicaid Participants<sup>1</sup>

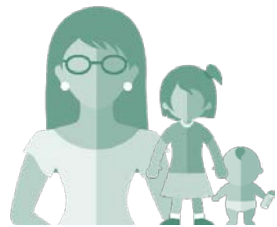
---



<sup>1</sup> Based on participant data for June 2021.

# Program Enrollment

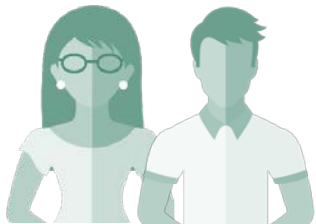
From July 2017 through June 2021, most participants in SNAP, TCA and/or Medicaid were children.



**Total Participants  
in Any Program**

**July 2017:  
3.4 million**

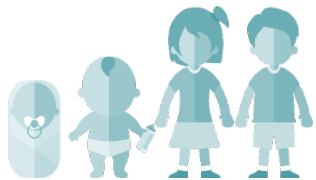
**June 2021:  
3.8 million**



**Adult Participants  
in Any Program**

**July 2017:  
1.2 million**

**June 2021:  
1.6 million**



**Child Participants  
in Any Program**

**July 2017:  
2.2 million**

**June 2021:  
2.3 million**

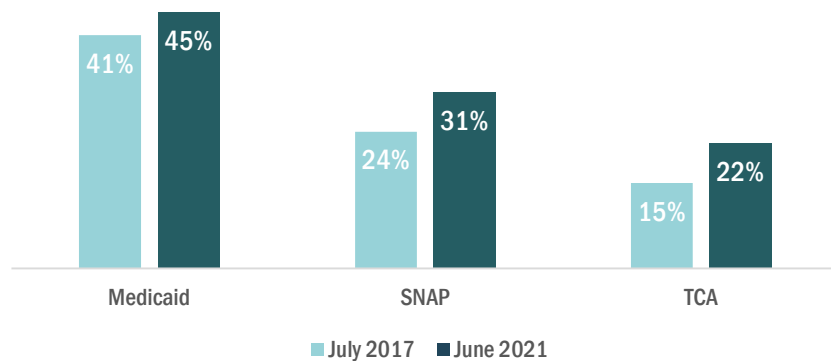


# Enrollment by Program

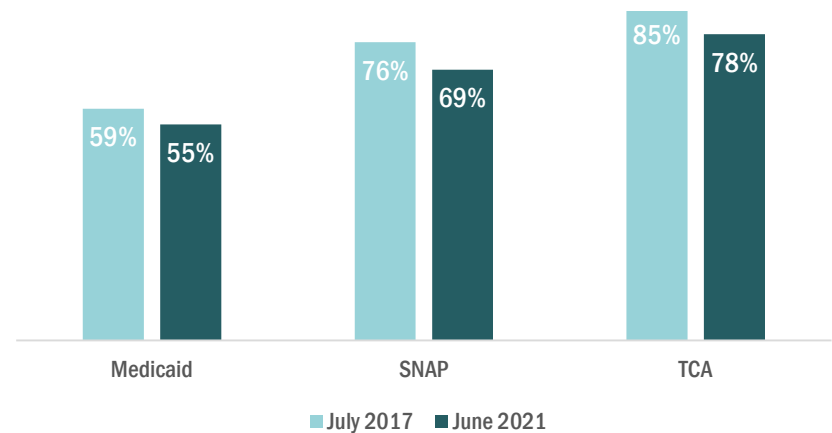
Participants in SNAP, TCA, and/or Medicaid	July 2017	June 2021
Total Medicaid Participants	2,761,151	3,134,574
Total SNAP Participants	2,233,728	2,400,736
Total TCA Participants	69,069	65,496

Source: OPPAGA analysis of Department of Children and Families data.

### Percentage of Program Participants Who Are Adults



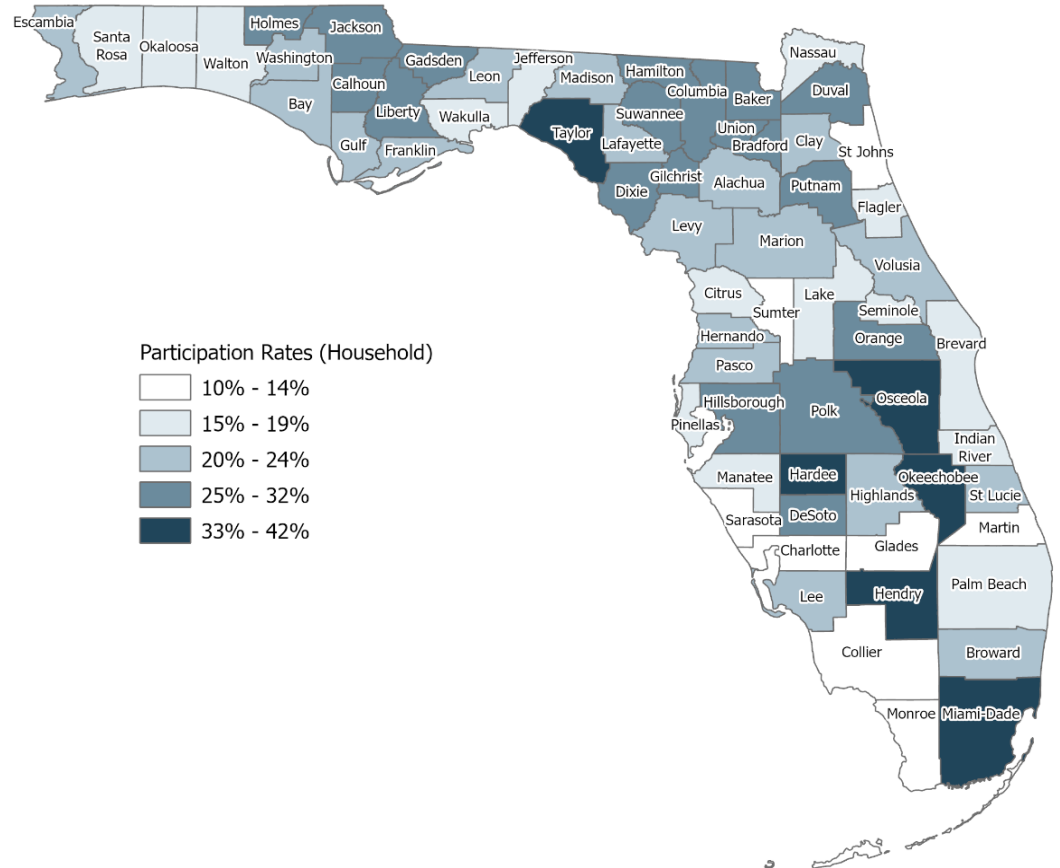
### Percentage of Program Participants Who Are Children



# SNAP, TCA, and Medicaid Participation Rates

Approximately 11% of adults and 51% of children in Florida were SNAP, TCA, and/or Medicaid participants in an average month.

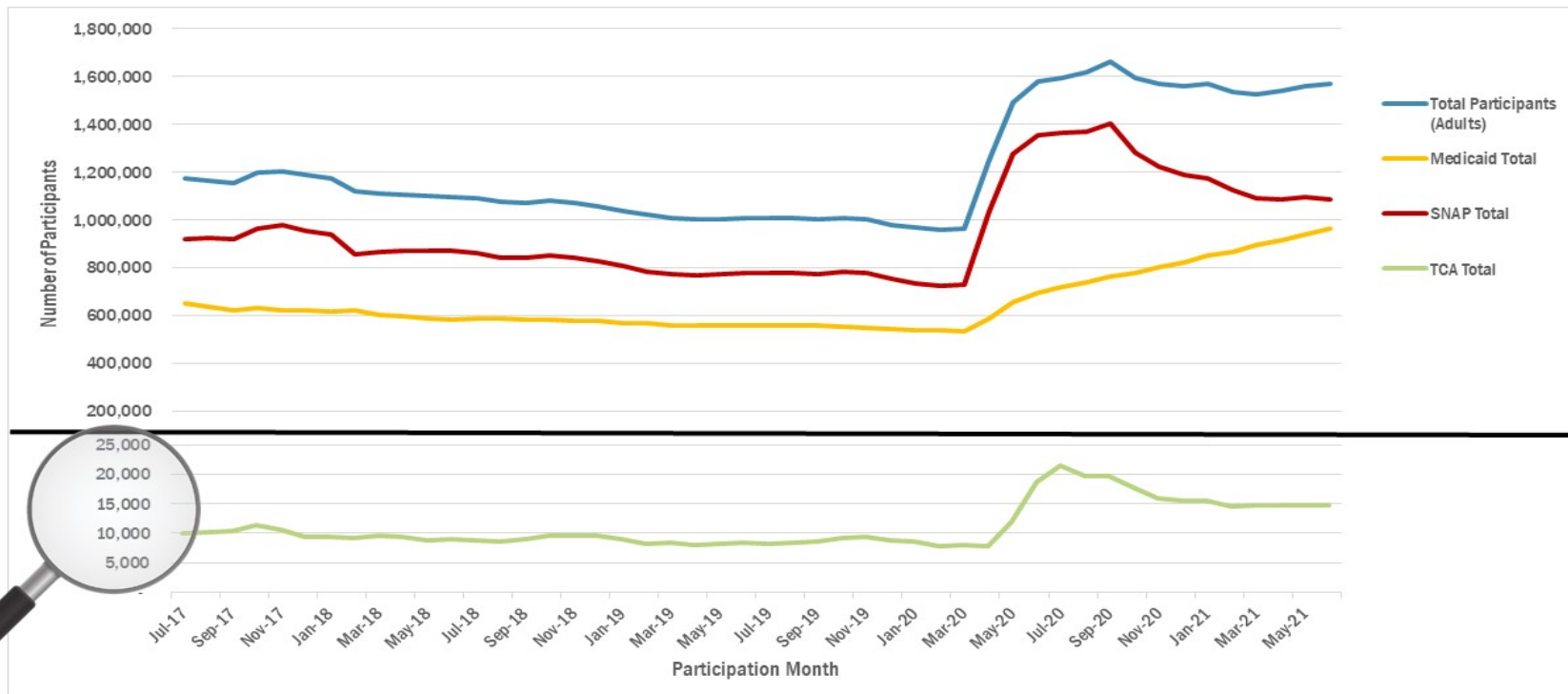
The percentage of Florida households with at least one child or adult participant in SNAP, TCA, and/or Medicaid ranged from 10-42% in June 2021.



# Adult Participation

Overall, more non-disabled working age adults participated in SNAP than TCA or Medicaid from July 2017 through March 2020.

## Adult Program Participation

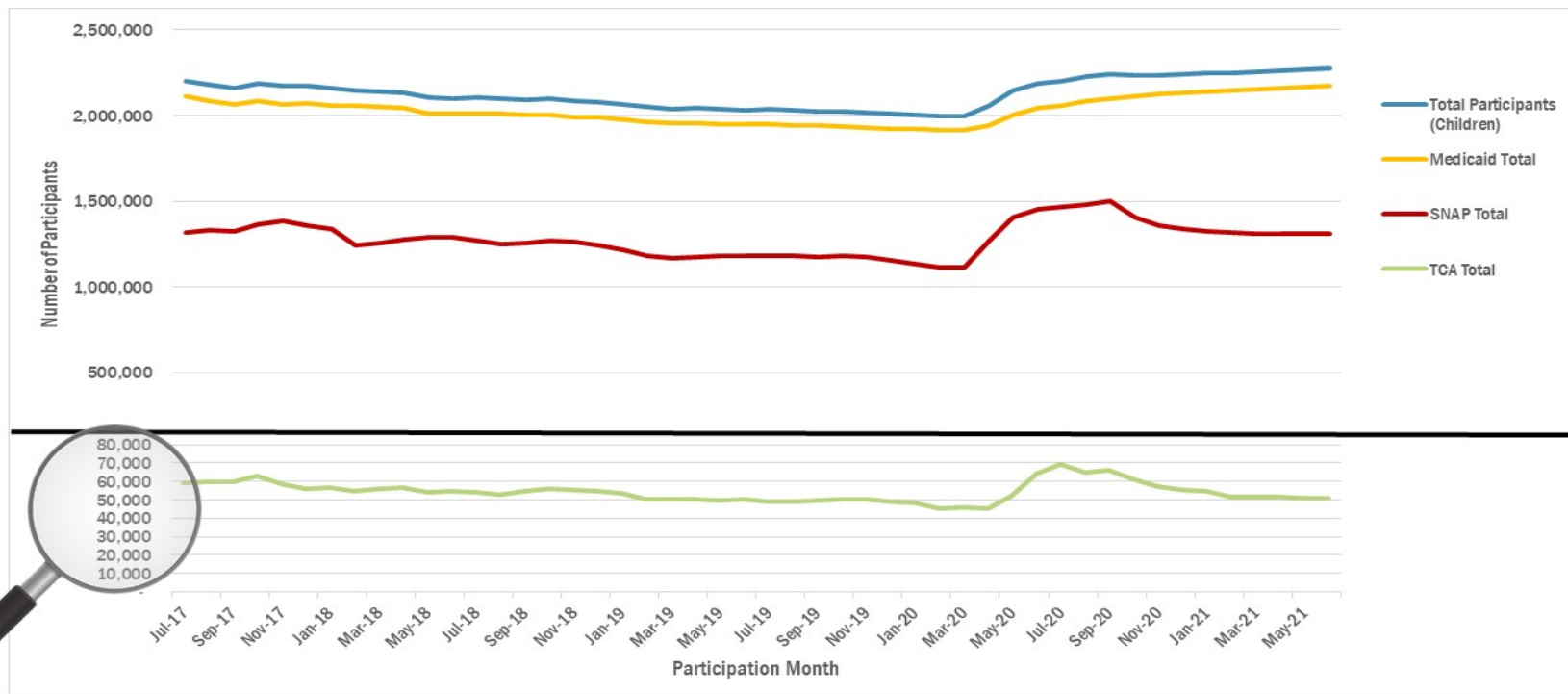


Source: OPPAGA analysis of Department of Children and Families data.

# Child Participation

Overall, more children participated in Medicaid than SNAP or TCA from July 2017 through June 2021.

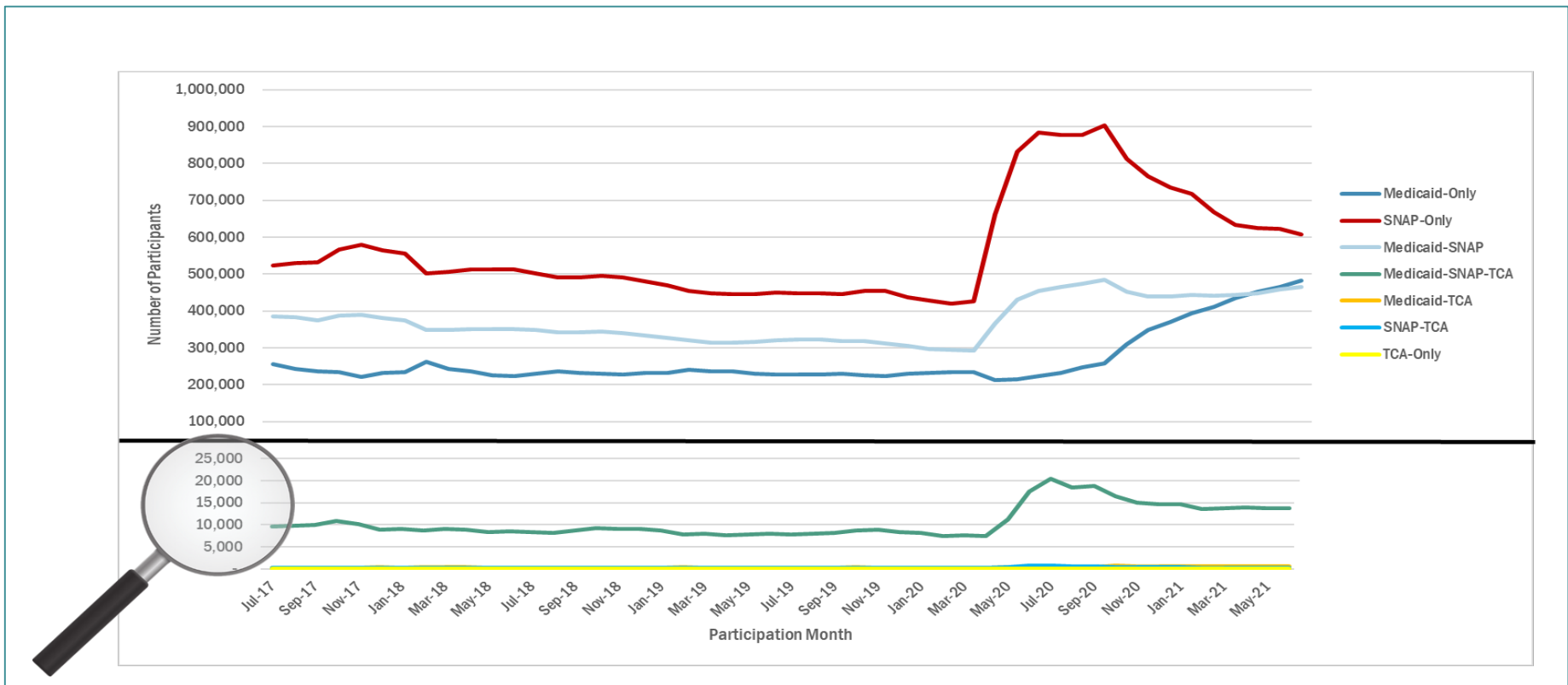
## Child Program Participation



Source: OPPAGA analysis of Department of Children and Families data.

# Adult Program Combinations

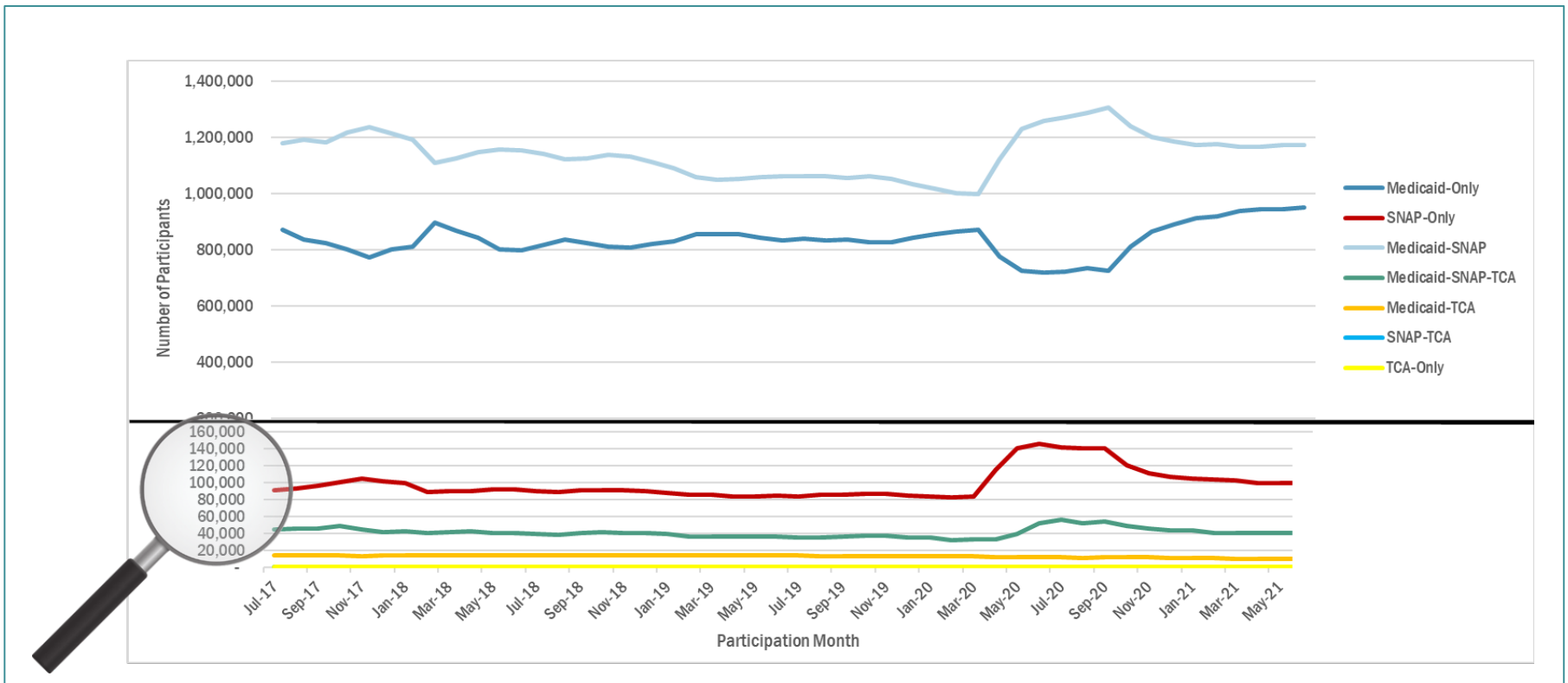
Overall, more non-disabled working age adults participated in SNAP-Only than any other combinations of programs from July 2017 through June 2021.



Source: OPPAGA analysis of Department of Children and Families data.

# Child Program Combinations

Overall, more children participated in Medicaid-SNAP than any other program combination from July 2017 through June 2021.



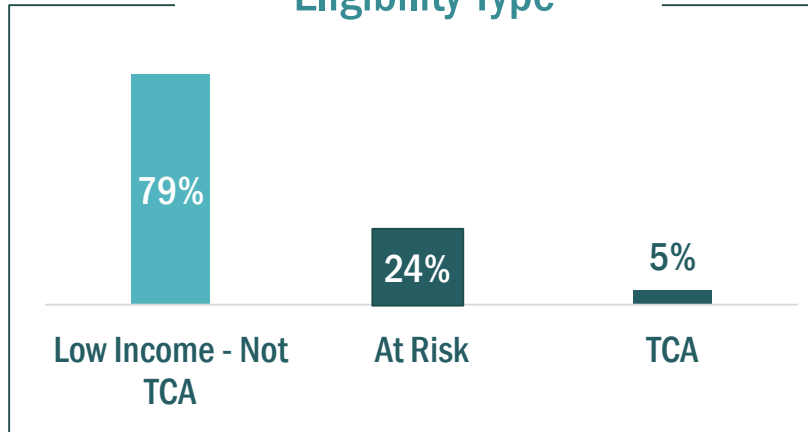
Source: OPPAGA analysis of Department of Children and Families data.

# School Readiness

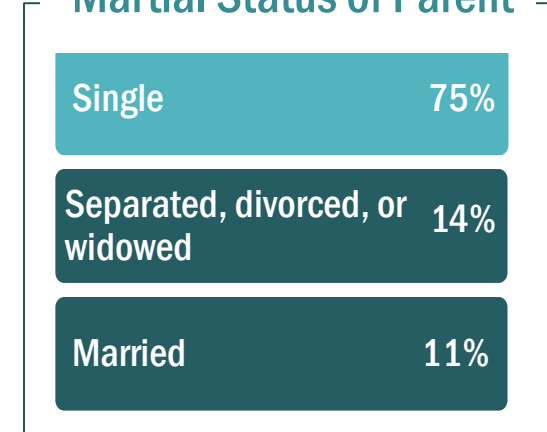
---

# Characteristics of School Readiness Participants in Fiscal Year 2019-20

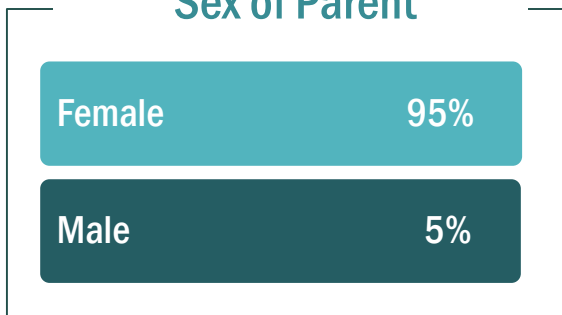
## Eligibility Type



## Marital Status of Parent



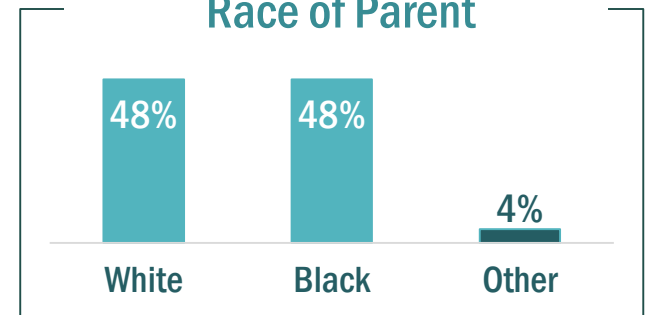
## Sex of Parent



## Service Duration



## Race of Parent

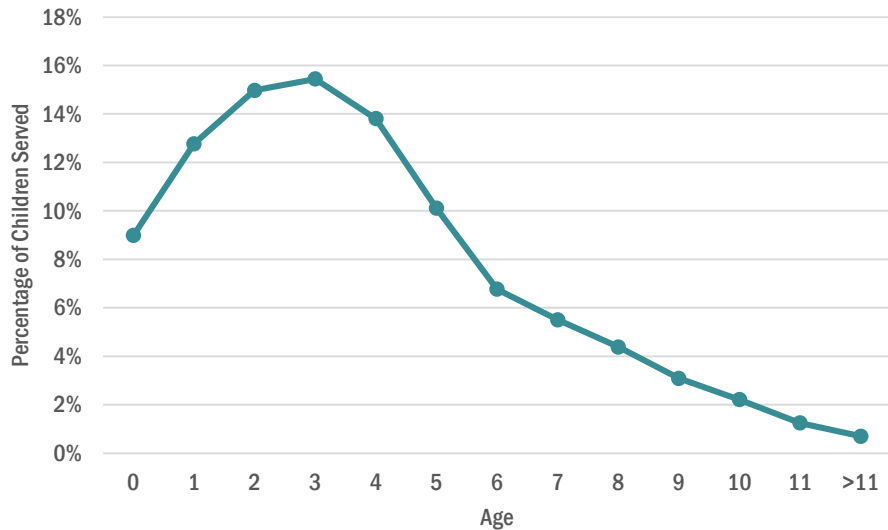




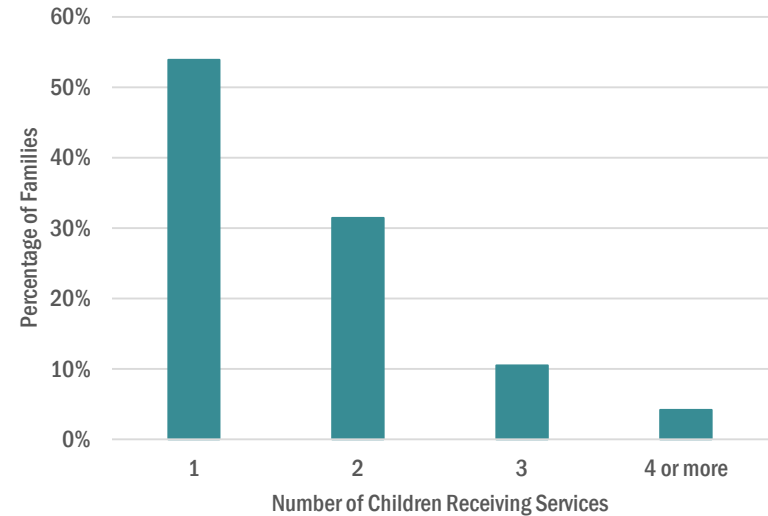
# Characteristics of School Readiness Participants in Fiscal Year 2019-20

Of the children served in School Readiness, 76% were under the age of 6; of the families served in School Readiness, 85% had 2 or fewer children served.

### Child Age



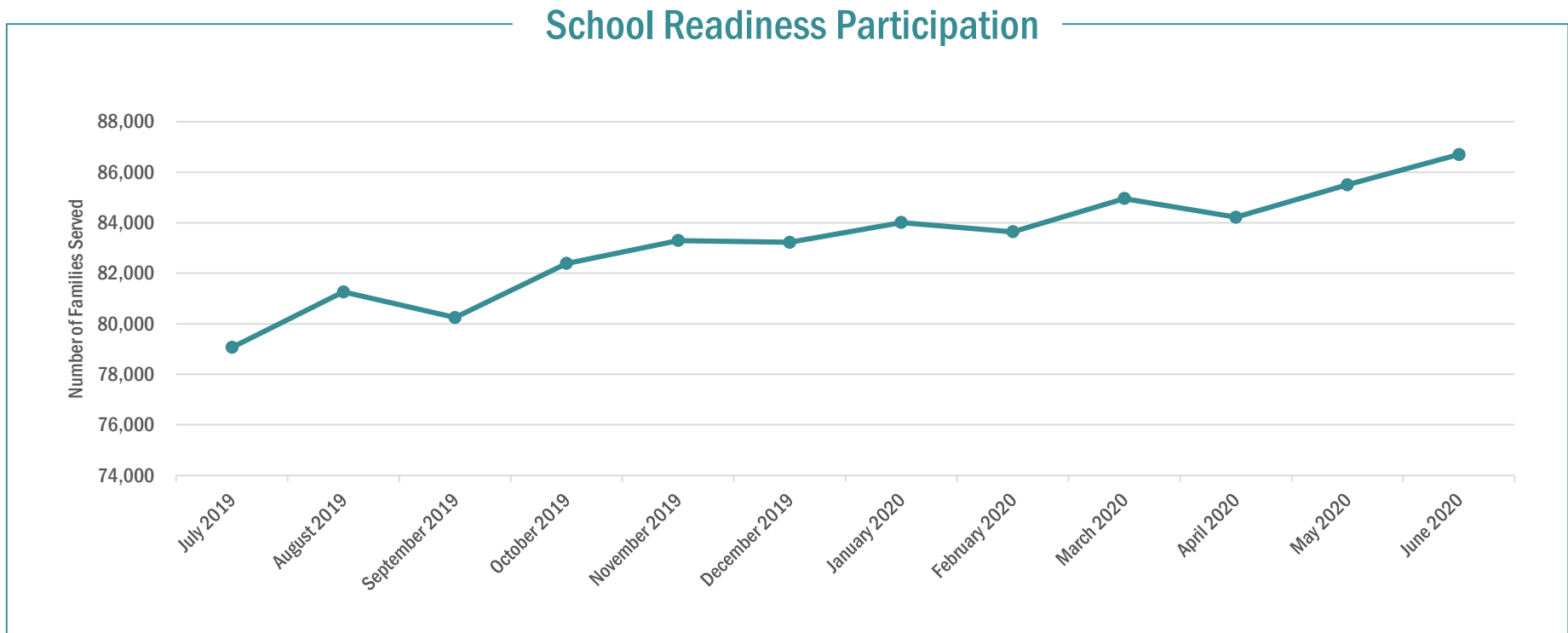
### Children Served



Source: OPPAGA analysis of Division of Early Learning data.

# School Readiness Participation

School Readiness participation generally increased during Fiscal Year 2019-20.



Source: OPPAGA analysis of Division of Early Learning data.

# Barriers to and Attainment of Economic Self-Sufficiency

---

# Barriers Faced by Public Assistance Program Participants

Barriers to ESS reported by Florida stakeholders were consistent with the ESS literature.

## Primary Barriers

Housing

Transportation

Child care

## Additional Barriers

Encountering benefits cliffs

Prior criminal justice system involvement

Lack of supportive networks

Mental health conditions

Lack of education and employable skills

Financial literacy

Florida stakeholders reported that several barriers are especially difficult to navigate; family composition and geographic location can have a negative impact on a household's ability to navigate barriers.

# Available Data on Participant Outcomes

---

## Exit reasons for TCA participants from Fiscal Year 2021-22

Approximately 2,338 families exit TCA each month

Approximately 313 families exit TCA due to earned income each month

Approximately 180 families re-enter each month after having exited TCA due to earned income

## OPPAGA analysis of DCF data from July 2017-June 2021

During the review period, 33% of all participants in any program had exited all programs for at least 6 months by June 2021

61% of participants were still participating; 6% had exited for fewer than 6 months at the end of OPPAGA's review

Of families that received School Readiness services in the first 6 months of Fiscal Year 2019-20, 62% continued receiving services for the remainder of the year.

# Summary

---



# Contact Information

---

Laila Racevskis, PhD

HHS Staff Director

 (850) 717-0524

 [racevskis.laila@oppaga.fl.gov](mailto:racevskis.laila@oppaga.fl.gov)

Cate Stoltzfus

HHS Chief Legislative Analyst

 (850) 717-0541

 [stoltzfus.cate@oppaga.fl.gov](mailto:stoltzfus.cate@oppaga.fl.gov)

Becca Smith

HHS Legislative Policy Analyst

 (850) 717-0533

 [smith.rebecca@oppaga.fl.gov](mailto:smith.rebecca@oppaga.fl.gov)

FLORIDA LEGISLATURE OFFICE OF PROGRAM POLICY ANALYSIS AND  
GOVERNMENT ACCOUNTABILITY

OPPAGA supports the Florida Legislature by providing data, evaluative research, and objective analyses that assist legislative budget and policy deliberations.